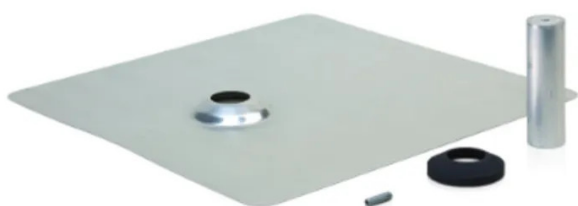


Item no.: SM-RM-T

SM-RM-T - Tile Roof Accessory Kit

7,65 EUR

Item no.: SM-RM-T
 shipping weight: 11.60 kg
 Manufacturer: Ubiquiti



Product Description

Ubiquiti SM-RM-T - Tile Roof Accessory Kit The Tile Roof Accessory Kit includes the extra components needed when mounting the panel hardware on a tile roof. The kit can accommodate either flat or shaped tile by forming the upper flashing. Two roof flashings should be used (one above and one below the tile) to assure a watertight connection. This kit is used in conjunction with the SM-RM-C Roof Mount Kit. Below are the components of the kit:

- 10x Extension Post, 125 mm
- 10x Stud, M8 x 1.25 x 30
- 10x Roof Flashing, Tile
- 20x Counter Flashing
- Allowable roof slope: 9.5 to 45° (2:12 to 12:12)
- Maximum Mount Span: Up to 1220 mm (48")
- Maximum cantilever: 400 mm (15 3/4") Portrait, 500 mm (19 11/16") Landscape
- Building height:
- Maximum windspeed: 240 km/h (150 mph)*
- Panel orientation: Landscape and Portrait
- Wind exposure category: B, C, D
- Maximum ground snow load: 3590 Pa (75 psf)
- System dead load: 11.6 kg (25 lbs) per mount**
- Height adjustability: 0 - 21 mm (0 - 0.83")
- Panel connectors: 2 or 4-way integrated grounding couplers
- Cables support clips: Black UV-resistant polycarbonate
- Trim skirt: Available in 3 different Lengths
- Cabling: IP67 rated UL and NEC compliant connectors
- Component materials: Aluminum and steel
- Component finishes: Black coatings
- Hardware: Geomet-plated steel
- Certifications: UL2703 (pending)
- Fire certification: Class A rating for steep slope roofs per UL2703
- Withdrawal force within dry douglas fir (SG=0.46) with 35 mm rafter penetration: 11,800 N (2650 lbs)
- Maximum side load: 1000 N (224 lbs)

* See Installation instructions for restrictions** Based on two mounts per panel

Specifications

Scan this QR code to
 view the product
 All details, up-to-date
 prices and availability

