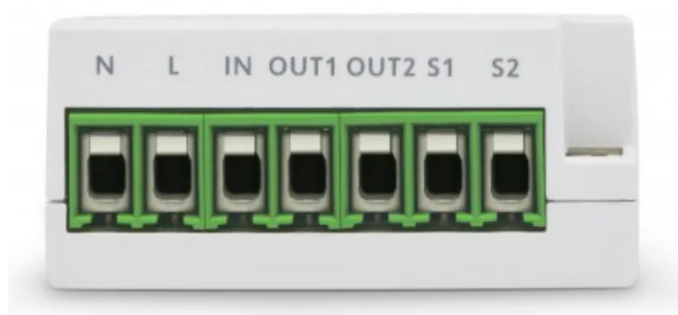


Item no.: 327104

AEOEZW132 - Dual Nano Switch with Power Metering

41,77 EUR

 Item no.: 327104
 shipping weight: 0.10 kg
 Manufacturer: Aeotec


Product Description

Aeotec Dual Nano Switch with Power Metering

With the AEOTEC Nano Switch all switchable and non-dimmable electric installations (e.g. lighting, sockets...) can be integrated into a Z-Wave network. Thus, the connected load can be switched both wirelessly via Z-Wave and locally via existing wall switch. Additionally, the ZW132 has an integrated power metering function which allows to detect the exact energy consumption of the connected load.

The compact radio module (60% smaller than its predecessor Micro Smart Switch) is placed in a wall box right behind the normal switch. The switch is no longer directly connected to the load but acts as input device for the AEOTEC insert that is controlling the load. The switch only sends control signal to the insert which controls the load then again. The solution works with all switch design. You can use a momentary or a toggle switch. Its recommended to use wall boxes with 65mm depth. But smaller boxes with only 45mm depth can be used also if there is enough space behind the switch. The available space depends on the size of the traditional switch, the dimensions of the wall box and the amount of additional cabling placed in this box.

Features:

- Flush-mounted radio module
- Maximum load: max. 2x 1150W
- Energy metering function
- Integrates existing installations (lighting, sockets...) into a Z-Wave network
- Works with momentary or toggle switches
- Voltage: 230V, 50Hz
- Wiring: Neutral conductor required
- Wireless Technology: Z-Wave Plus
- Article Dimensions (WxHxL): 42 x 21 x 42 mm
- Package Dimensions (WxHxL): 73 x 30 x 73 mm
- Article net weight: 0.035 Kg
- Article gross weight: 0.053 Kg
- Z-Wave Plus
- WEEE
- CE
- IP-Rating: IP20

Specifications

Scan this QR code to
view the product
All details, up-to-date
prices and availability

