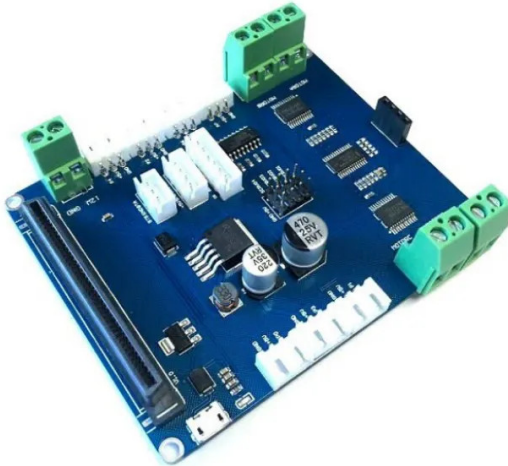


Item no.: 331233

BPI:BIT ROBOT EXPANSION BOARD - Banana Pi BPI:Bit-Robot - Expansion Board

from **18,06 EUR**

Item no.: 331233
shipping weight: 0.10 kg
Manufacturer: BPI



Product Description

Banana Pi BPI:Bit-Robot - Expansion Board

The BPI:bit robot is a bpi-bit development board, which is mainly designed for smart cars and robots with a BPI-bit od micro-bit as the core board. At the same time, it also takes into account the ordinary IO extension function, which makes it more convenient for users to use their imagination and create more possibilities for use.

Furthermore, there are two kinds of power-supply modes, one mode with a 12 V/ 2 A DC power supply and the other with a 5 V/ 2 A via micro USB power adapter. If you want use dc motor and servo motor, you must use must use 12 V DC supply.

Additionally, the BPI:bit robot extension board has (MOTOR A-MOTOR D) 4x sets of 8x MOTOR controls, which can control four DC motor forward and reverse rotation and eight DC motor one-way rotation. At the same time, four standard steering engine interfaces are designed on the extended version to control four servo motors at the same time. The control signal of DC motor and steering engine is chip (PCA9685) extended by the IIC bus interface. The motor interface use the extended PWM interface, which does not conflict with the sensor interface.

Specifications

**Scan this QR code to
view the product**
All details, up-to-date
prices and availability

