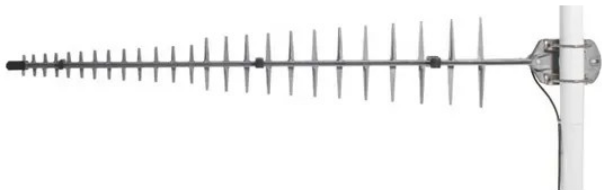


Item no.: LPDA-A0092

LPDA-92 - LPDA-A0092 - Directional all band cellular LPDA antenna

111,61 EUR

Item no.: LPDA-A0092
 shipping weight: 2.00 kg
 Manufacturer: Poynting



Product Description

Poynting LPDA-A0092 directional All Band Cellular LPDA Antenna

This high gain wideband directional antenna covers all international cellular, mobile and wireless data bands including GSM 900/GSM1800/UMTS/LTE bands as well as extended cellular and WiMAX bands such as European/USA Digital Dividend bands and 2.3 - 2.7 GHz licensed and unlicensed data bands. Its configuration is suitable for various wireless communications systems.

Features:

- High gain
- Broadband – all cellular/LTE/Wireless data bands in 694 MHz - 3 GHz range
- Easy alignment with main beam around 50 degrees wide
- Tremendous improvement on reliability of wireless data
- Robust and weatherproof
- Four year track record in all climate conditions from nordic to desert to tropical
- 7 m HDF195 cable with SMA male connector

Application areas:

- Fixed wireless voice and data applications
- M2M communications (ATMs, financial data processing, telemetry etc)
- Extending wireless data to weak signal areas (can extend connectivity range by factor of 3 or more)
- Enables rural and remote wireless service provision

Frequencies in MHz:

- US Digital Dividend 700 MHz band: 694 - 820
- European Digital Dividend 800 MHz band (LTE): 790 - 862
- TDMA/CDMA/AMPS: 824 - 894
- SM GSM 900: 870 - 960
- TACS Europe and Asia only: 871 - 949
- GSM 1800 / PCS/ PCN: 1710 - 1880
- GSM GSM1900 USA and Canada only: 1850 – 1990
- DECT: 1880 - 1900
- PHS Japan, Taiwan and China only: 1895 - 1918
- UMTS: 1990 - 2170
- Licensed WiMAX/LTE bands: 2300 - 2400
- International ISM 2.4 GHz band: 2400 - 2500
- Licensed WiMAX/LTE bands: 2500 - 2700
- 3G Extension band: 2500 – 2690

Electrical:

- Frequency (MHz): 694 - 1000 MHz; 1500 - 3000 MHz
- Gain: 11 dBi (+/-0.5 dB)
- VSWR: < 2.0:1
- E-Plane 3 dB beamwidth: 50 (+/-5)
- H-Plane 3 dB beamwidth: 55 (+/-5)
- Front to back (F/B ratio): 20 dB (+/-3 dB)
- Nominal input impedance: 50 ohm
- Polarisation: Linear

Environmental:

- Wind survival: 160km/h
- Temperature range (operating): -20 °C to +70 °C
- Shock: 40G at 10 msec
- Thermal shock: -20C to +70C: 10 cycles
- Water ingress rating: IP65 (NEMA 4X)

Mechanical:

- Dimensions (l x w x d): 1100 x 180 x 60 mm
- Weight: 1.29 kg
- Mounting bracket: Stainless steel up to 60 mm poles

Specifications

**Scan this QR code to
view the product**

All details, up-to-date
prices and availability

