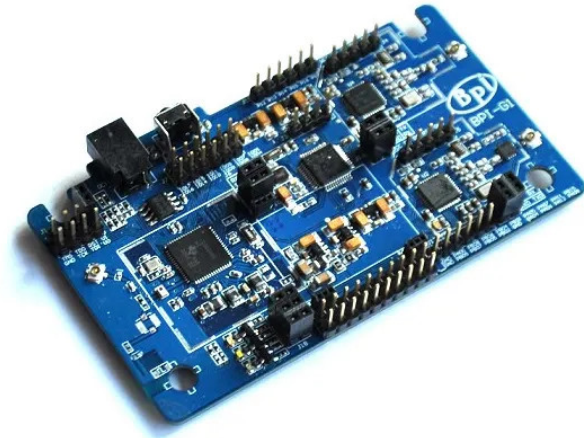


Item no.: BPI-G1

BPI-G1 - Banana Pi - Wi-Fi, BT4.0, ZigBee Smart Home Gateway Board

40,61 EUR

Item no.: BPI-G1
shipping weight: 0.10 kg
Manufacturer: BPI



Product Description

Banana Pi BPI-G1 - Wi-Fi, BT4.0, ZigBee Smart Home Gateway Board

The Banana Pi G1 is a micro computer board that features tons of connectivity including Wi-Fi, Bluetooth and ZigBee. Running on TI energy efficient processors, the G1 is a hackable home automation controller. The G1 comes with prebuilt operating systems and mobile apps so you can easily connect to your smart lightbulbs with a relatively easy set up (compared to writing an OS on your own).

Internet of Things will be the focus of this decade and we want to make DIY IoT projects affordable, fun and useful in your home. This smart hub will bring many devices together and wrap it in a neat package for you to tinker.[Wi-Fi](#)

CC3200 device is an integrated high-performance ARM Cortex-M4 MCU and with a Wi-Fi network processor subsystem (This subsystem includes 802.11 b/g/n radio, baseband, network protocol stack and a powerful encryption engine MAC, supports 256-bit encryption in order to achieve a fast, secure Internet connection). This device contains a variety of peripherals, I2S, SD/MMC, UART, SPI, I2C and four channel analog to digital converter (ADC).[Bluetooth](#)

CC2540 device is a low cost, low power, true system-on-chip (SoC) for Bluetooth low energy applications. It enables to build a strong BLE master or slave node with very low total cost BOM. The CC2540 combines the excellent RF transceiver, the industry-standard enhanced 8051 MCU, in-system programmable flash memory, 8 KB RAM and many other powerful auxiliary functions and peripherals.[ZigBee](#)

CC2530 device is a true system-on-chip (SoC) for IEEE802.15.4, Zigbee RF4CE applications and solutions. It enables the establishment of a strong network of nodes and very low total cost BOM. CC2530 combines leading RF transceiver, the industry-standard enhanced 8051 MCU, in-system programmable flash memory, 8 KB RAM outstanding performance and many other powerful features.

- CPU: STM32F103CB ARM Cortex(TM)-M3 32-bit RISC core
- Power: 5 V DC
- Buttons: Reset
- LED: Wi-Fi, Bluetooth, ZigBee
- Monitor: OLED (128 x 64)
- OS: Free RTOS, Ti OS, Coustom OS
- Product size: 95 x 56 mm
- Weight: 19 g

Specifications

Scan this QR code to
view the product
All details, up-to-date
prices and availability

