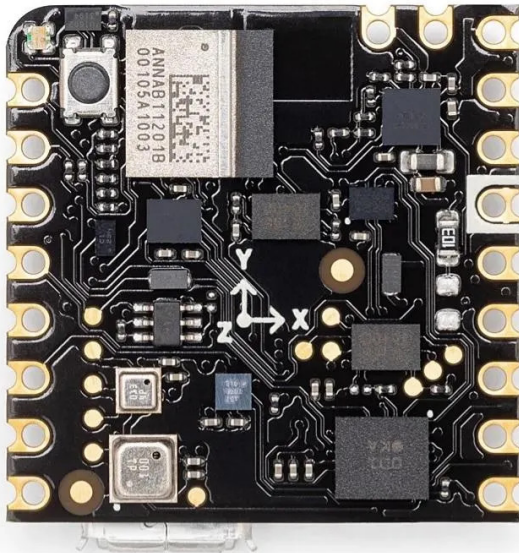


Item no.: 353159

ABX00050 - Nicla Sense ME Board

77,01 EUR

Item no.: 353159
 shipping weight: 0.10 kg
 Manufacturer: Arduino



Product Description

Nicla Sense ME Board

The Nicla Sense ME is a tiny, low-power tool that sets a new standard for intelligent sensing solutions. With the simplicity of integration and scalability of the Arduino ecosystem, the board combines four state-of-the-art sensors from Bosch Sensortec:

- BHI260AP motion sensor system with integrated AI
- BMM150 magnetometer
- BMP390 pressure sensor
- BME688 4-in-1 gas sensor with AI and integrated high-linearity, as well as high-accuracy pressure, humidity and temperature sensors

Designed to easily analyze motion and the surrounding environment – hence the "M" and "E" in the name – it measures rotation, acceleration, pressure, humidity, temperature, air quality and CO2 levels by introducing completely new Bosch Sensortec sensors on the market.

Its tiny size and robust design make it suitable for projects that need to combine sensor fusion and AI capabilities on the edge, thanks to a strong computational power and low-consumption combination that can even lead to standalone applications when battery operated.

Part of Arduino Pro's new Nicla family of modular, intelligent products that are easy to use, cost effective, versatile and accessible, the Sense ME has a new, tiny form factor that is also compatible with the Arduino MKR and Portenta ranges.

- Microcontroller: 64 MHz Arm® Cortex M4 (nRF52832)
- Sensors: BHI260AP - Self-learning AI smart sensor with integrated accelerometer and gyroscope; BMP390 - Digital pressure sensor; BMM150 - Geomagnetic sensor; BME688 - Digital low power gas, pressure, temperature & humidity sensor with AI
- I/O: Castellated pins with the following features: 1x I2C bus (with ext. ESLOV connector); 1x serial port; 1x SPI; 2x ADC; programmable I/O voltage from 1.8-3.3 V
- Connectivity: Bluetooth® 4.2
- Power: Micro USB (USB-B), pin header, 3.7 V Li-po battery with integrated battery charger
- Memory: 512 KB Flash/64 KB RAM, 2 MB SPI Flash for storage, 2 MB QSPI dedicated for BHI260AP
- Interface: USB interface with debug functionality
- Dimensions: 22,86 x 22,86 mm
- Weight: 2 g

Specifications

**Scan this QR code to
view the product**

All details, up-to-date
prices and availability

