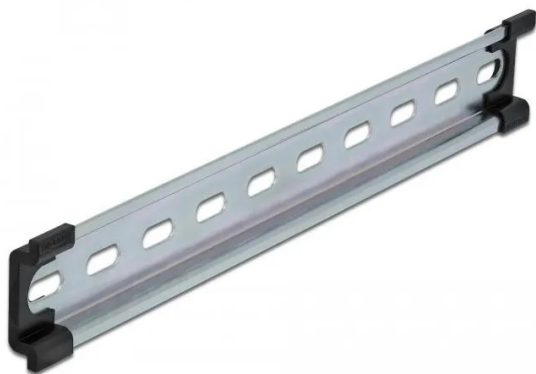


Item no.: 349753

66192 - Top-hat rail 35 x 7.5 mm (25 cm) steel

from **2,20 EUR**

Item no.: 349753
shipping weight: 0.20 kg
Manufacturer: Delock



Product Description

Top-hat rail 35 x 7.5 mm (25 cm) steel

This top-hat rail from Delock is suitable for mounting various electronic devices and components.

The top-hat rail can be fixed in a control cabinet and is used as a mounting system for e.g. power supplies, screw terminals and interface modules.

To enable easy mounting, the top-hat rail is provided with slotted holes.

- Mounting hole: 15.0 x 6.2 mm
- Material: steel
- Dimensions (LxWxH): approx. 250 x 35 x 7.5 mm
- Package contents: 1 x top-hat rail, 2 x end cover

Specifications

Scan this QR code to
view the product
All details, up-to-date
prices and availability

