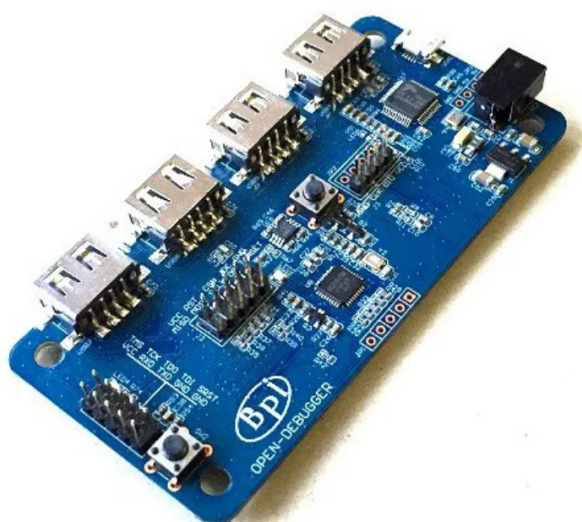


Item no.: BPI-G1_OPEN_DEBUGGER

BPI-G1 OPEN DEBUGGER - Banana Pi - Open Debugger Board

40,79 EUR

Item no.: BPI-G1_OPEN_DEBUGGER
shipping weight: 0.10 kg
Manufacturer: BPI



Product Description

Banana Pi BPI Open Debugger Burn Board

Open Debugger is a set of programming tools developed for STM's series of microcontrollers and TI's CC1x, CC2x and CC3x series SoCs. An MCU can be programmed quickly and debugged easily.

In addition, the board also integrates a USB to serial port, which is a common interface for embedded development. It also has 1x USB 2.0 hub, making it easy to extend to other USB tools. You no longer need to face a complicated mess of wiring or USB port deficiencies.

- Operating voltage: DC 5 V
- Operating temperature: 0°C to 85°C
- Onboard voltage output: 3.3 V
- Maximum output current: 2000 mA
- Supported operating systems: Windows(R) 2000, Windows XP SP2/SP3 (32-bit versions), Windows Vista(R) (32 and 64-bit), Windows 7 (32 and 64-bit), Windows 8 (32 and 64-bit)

Specifications

**Scan this QR code to
view the product**

All details, up-to-date
prices and availability

